

# LIGHT SWING GATE

LIGHT SWING GATE



**10**  
YEARS OF  
GUARANTEE

## OUTSTANDING

- Gates manufactured with metal sections and electro-welded mesh.
- Versatility for openings
- Perfect fitting of the gate leaves
- High quality materials and accessories
- Gates approved to the CE standard

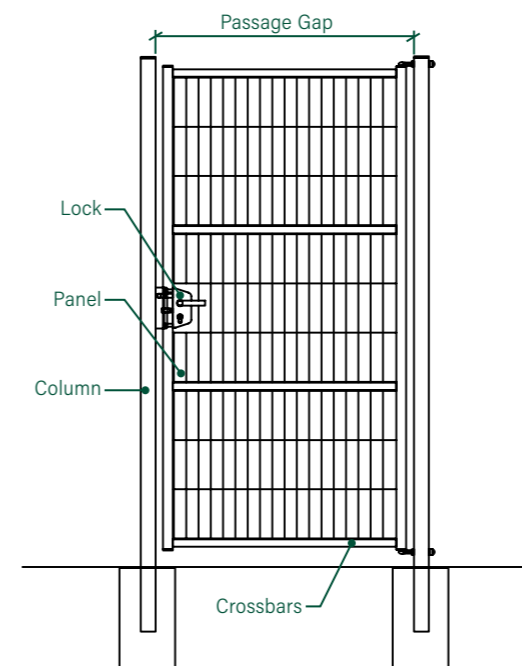
## Application places



## Assembly

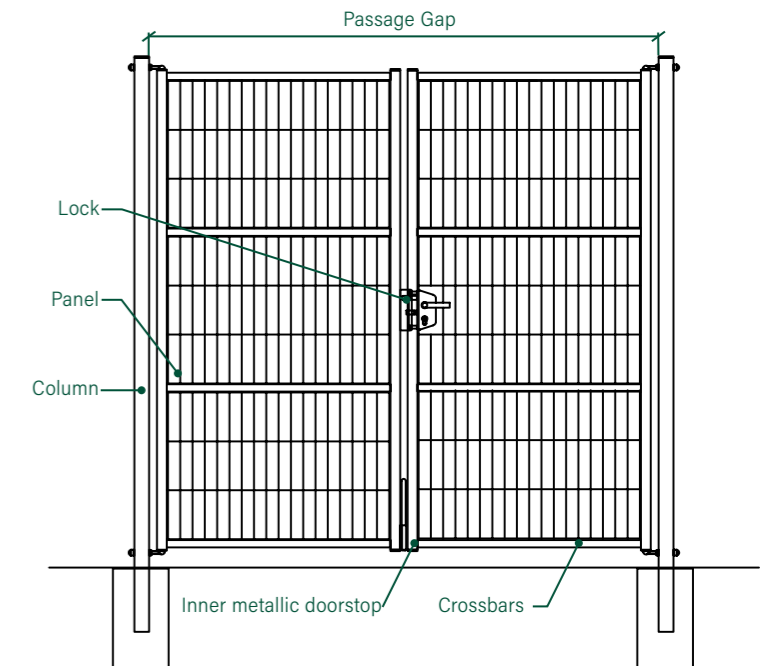
### ONE-LEAF GATE

Interior right opening (standard)



### TWO-LEAF GATE

Interior opening (standard)



## Technical features

- Uprights and mesh: Leaf formed of metal profiles (see table) and electro-welded mesh measuring 200/50 Ø5mm
- Support columns with square profile (see table), with small flanges for optionally attaching struts, the end post of the fence or the grips for embedding in a wall as required
- Adjustable hinges allowing for a better fit of the gate
- Lock with box and plastic keyhole cover (see detail) and with the option of installing an automatic locking system
- Barbed wire (extension arm) accessory fastened to the leaf by means of non-removable screws

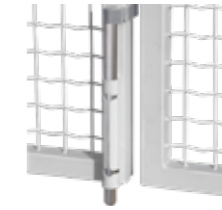
DESCRIPTION		WEIGHT (KG)	TYPE (mm)	COLUMNS (mm)	TOTAL WIDTH (mm)	PASSAGE GAP (mm)	NO. OF LEAVES	FRAMES (mm)	CROSSBAR (mm)
WIDTH	HEIGHT								
1m00	1m00	26	886	Ø60x2	1171	1051	1	40x40x1.5	30x30x1.5
	1m20	28	1124						
	1m50	31	1523						
	1m80	35	1723	60x60x2					
	2m00	39	1960						
2m00	1m00	29	886	Ø60x2	2192	2072	2	40x40x1.5	30x30x1.5
	1m20	35	1124						
	1m50	43	1523						
	1m80	52	1723	60x60x2					
	2m00	58	1960						
3m00	1m00	36	886	60x60x2	3192	3072	2	40x40x1.5	30x30x1.5
	1m20	43	1124						
	1m50	55	1523						
	1m80	65	1723	80x80x2					
	2m00	71	1960						
4m00	1m00	48	886	80x80x2	4232	4072	2	40x40x1.5	30x30x1.5
	1m20	58	1124						
	1m50	70	1523						
	1m80	86	1723	100x100x2					
	2m00	121	1960						
5m00	2m00	130	1960	100x100x2	5288	5088	2	40x40x1.5	30x30x1.5
6m00	2m00	139	1960	100x100x2	6166	5966	2	40x40x1.5	30x30x1.5

## Accessory column for residential areas



### LOCK

Lock fitted with a non-degradable polypropylene casing and cover. Option of installing an electric lock.



### METAL BOLT

Assembly consisting of a metal stop anchored to the floor and a latch mounted in the centre of the two leaves to prevent the door from being opened from the outside.



### POLYAMIDE LOCK FOR WICKET DOOR

Polyamide lock for garden gates. Clamp fixing ensures quick and robust mounting on square or round posts.

For Ø60mm profile

For Ø40mm profile



### METAL STOP

Metal stop for swing gates with internal opening.



### HINGES

Adjustable hinges for perfect gate adjustment.

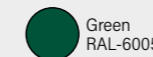
## Anticorrosion coating

All the materials of system are hot dip galvanised and plastic coated with **Rivisa® Protecline** anticorrosion coating system.

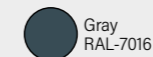
- Minimum thickness: 100 microns
- Option of applying the **Rivisa® Protecline Plus** plastic coating, which prolongs the useful life of the materials
- Option of applying the **Rivisa® Protecline Plus triple** plastic coating, which prolongs the useful life of the materials
- Available in several colours from the Rivisa RAL chart. Colours:



White RAL-9010



Green RAL-6005

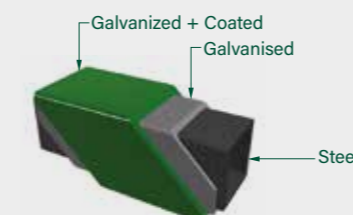


Gray RAL-7016

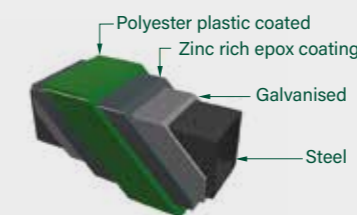


For other colours see Rivisa RAL chart

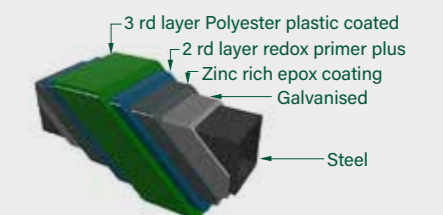
### protecline



### protecline PLUS



### protecline TRIPLE



## Marking of swing doors

**Rivisa®** complies with the standard: **EN-13241-1:2003** which defines the safety and performance requirements for swing doors when installed in areas accessible to people. **Rivisa®** standard doors successfully passed the "TEST OF DECLARATION OF CONFORMITY" to obtain the certificate.

